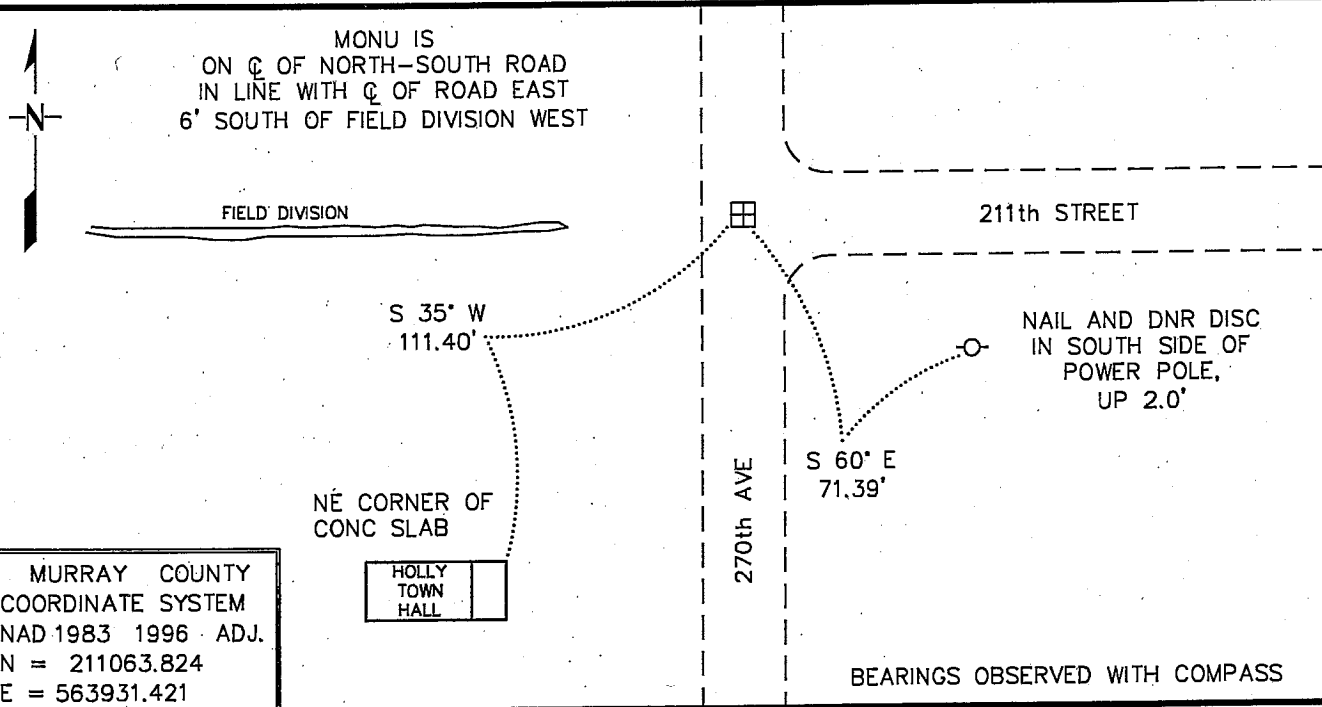


# CERTIFICATE OF LOCATION OF GOVERNMENT CORNER

NORTHEAST Corner of Section 21, Township 108 N, Range 39 W  
5th Principal Meridian, State of Minnesota, County of MURRAY

At the corner location shown on the sketch:

- On 7/28/2009 found a 8" X 8" X 16" STONE, DOWN 1.5'  
DATE
- left monument as found,     lowered monument,     removed monument (explain)
- On 7/28/2009 Placed a 3/4" X 12" REBAR WITH PLASTIC CAP STAMPED  
DATE  
"MN DNR LS 17003", DOWN 0.4', OVER STONE



Statement of evidence for this corner location is on back of this page.      9/2/2009  
TRA00706.00.00.01

I certify that this document was researched and prepared by me or under my direct supervision.

SIGNATURE Russell W. Stapp      DATE 9/14/09      License Number 17003

Title:     Land Surveyor     Professional Engineer     County Surveyor     County Engineer

The DNR Division of Lands and Minerals contacted the following for survey information:

Minnesota History Center in St. Paul  
Murray County Recorder's Office  
Murray County Highway Engineer's Office  
Zieske Land Surveying, Inc. of Windom  
Bueltel-Moseng Land Surveying of Marshall

- 1861 U.S. General Land Office notes, obtained from the Minnesota History Center, show the corner marked with a wood post with pits and mound.
- 1898 December 22, Surveyor's Record Book A, Page 114, obtained from the County Recorder's Office, contains a survey in Section 15 by J.W. Woolstencroft. Survey graphically shows corner and a point is graphically shown on the section line southerly of the west quarter corner but no distances along the section line are shown. Descriptions of monuments found or set at section or quarter corners are not given.

The above information is also contained in a Surveyor's Record Book, obtained from the County Highway Engineer's Office.

- 1901 Surveyor's Record Book A, Pages 240, 254, 255, 260 and 261, obtained from the County Recorder's Office, contains a survey by D.L. Bighorn, Redwood County Surveyor, which record was made on June 12, 1915, by J.R. Johnston, Murray County Surveyor, from original plat on file in the office of the Town Clerk of Holly Township. Survey shows corner but does not indicate what kind of monument was found or set. The corner is shown:
- 2648.5 feet from the north quarter corner of Section 21
  - 5297.0 feet from the northwest corner of Section 21
  - 2645.6 feet from the east quarter corner of Section 16
  - 2645.6 feet from the east quarter corner of Section 21
  - 5291.2 feet from the northeast corner of Section 16
  - 2638.10 feet from the north quarter corner of Section 22

The above information is also contained in a Surveyor's Record Book, obtained from the County Highway Engineer's Office.

- 1915 June 19, Surveyor's Record Book A, Page 277, obtained from the County Recorder's Office, contains a survey by J.R. Johnston, Murray County Surveyor. Survey states the following about the corner:
- “stone set previously and located by testimony of old residents”
- The corner is shown:
- 2640 feet from the south quarter corner of Section 15

2009 July 28, the DNR Division of Lands and Minerals hired a backhoe to dig for evidence of the corner. An 8 inch by 8 inch by 16 inch stone, with a wood lath on its north edge, were found 1.5 feet below the surface at natural ground. Continued digging to a depth of 2 feet but no other evidence of a monument was found. Also, scanned the bottom of the excavation with an electronic metal detector but no metal attraction was obtained.

The excavation was 6 feet north-south by 3 feet east-west by 2 feet deep the center being on the centerline of a north-south road and in line with the centerline of road east.

The 8 inch by 8 inch by 16 inch stone was reset as found and a  $\frac{3}{4}$  inch by 24 inch long rebar was set on its west edge and a  $\frac{3}{4}$  inch by 12 inch rebar with a plastic cap stamped "MN DNR LS 17003" was set over the stone and found it to be:

on the centerline of a north-south road

in line with the centerline of a road east

6.0 feet south of a field division west

2642.04 feet from the north quarter corner of Section 21

5291.65 feet from the northwest corner of Section 21

2646.74 feet from the east quarter corner of Section 16

5293.48 feet from the northeast corner of Section 16

Consulted with LaMoine Meyer, Holly Township Clerk, about the 1901 survey by D.L. Bighorn, and he said that the survey information that the Township has is the same as what's on file at the County Recorder's Office.

Analysis of the above information led the DNR Division of Lands and Minerals to conclude that the  $\frac{3}{4}$  inch by 12 inch long rebar with a plastic cap stamped "MN DNR LS 17003", which was set over a found 8 inch by 8 inch by 16 inch stone marks the location of the corner.